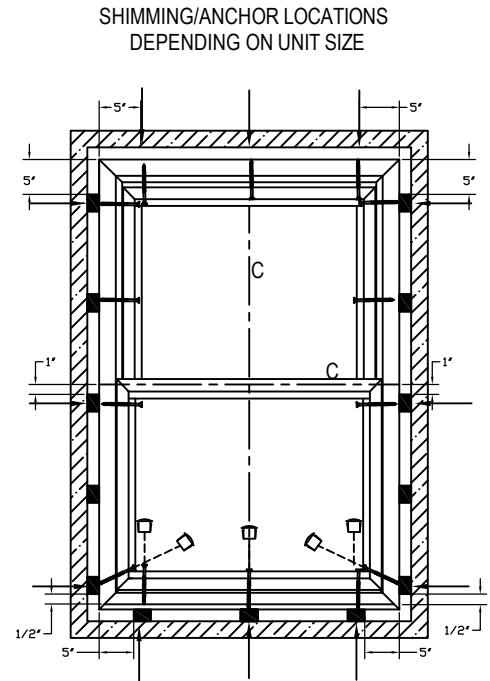
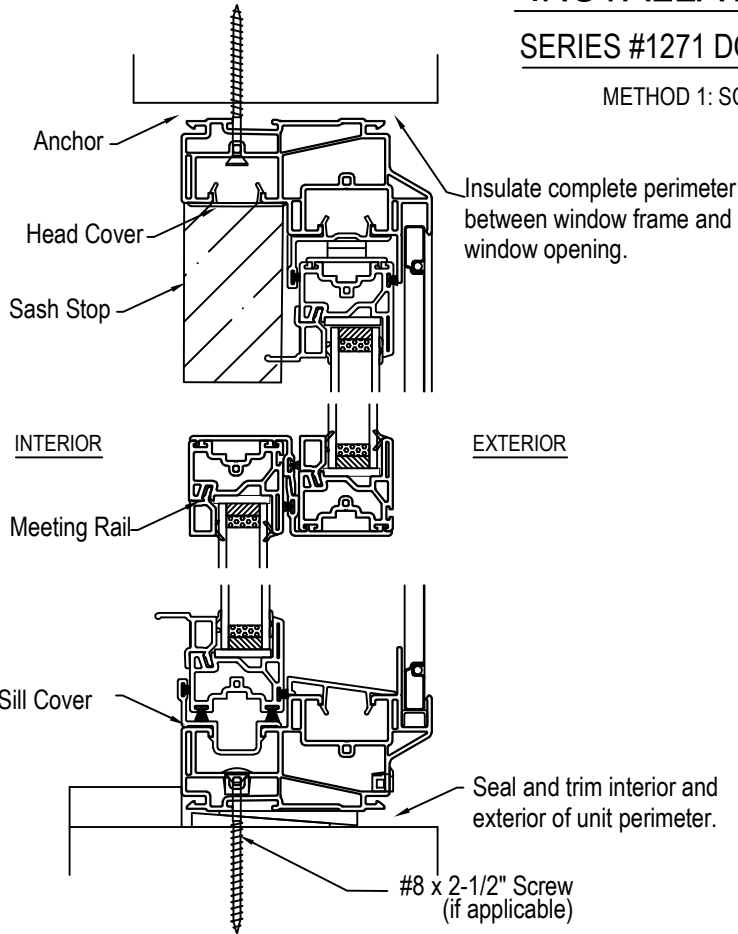


INSTALLATION INSTRUCTIONS

SERIES #1271 DOUBLE HUNG TILT WINDOW

METHOD 1: SCREWING THROUGH THE FRAME



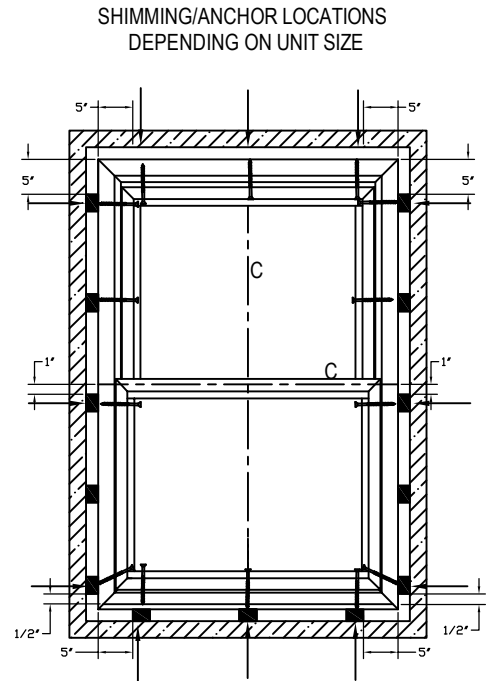
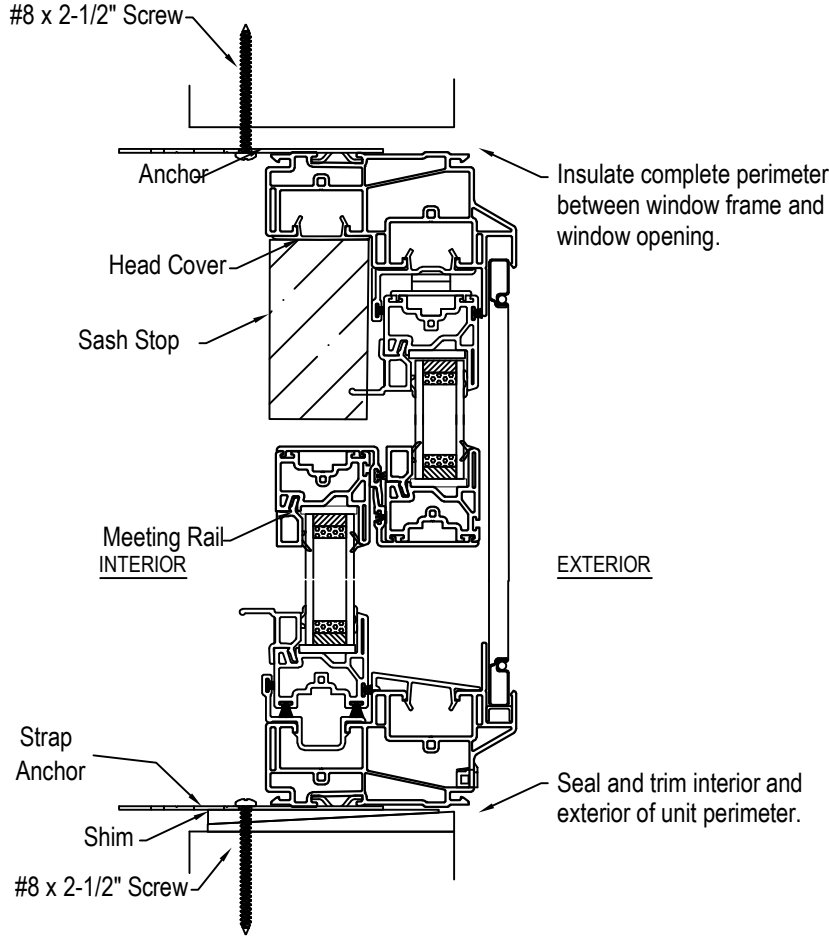
- 1.) Do not cut center banding.
 - 2.) Check rough opening to ensure that the window unit will fit. Rough opening should be 1/4" to 1/2" larger than the window, both horizontally and vertically.
 - 3.) Center frame in opening so there is equal space between the jambs of the frame and the jambs of the rough opening.
 - 4.) Unlock window and slide both sashes to center.
 - 5.) Locate head and sill snap-in covers on the interior track and remove them by inserting a sharp chisel and prying.
 - 6.) **Shim sill** so it is level and 1/8" to 1/4" off the sill plate.
 - 7.) Shim the **sill**: 5" inch from each end and at 16" inch intervals. (Do not over shim and do not shim the head)
 - 8.) Install screws through frame header in tracks where head cover was removed, 5" inches from each corner and in the center. Be careful not to bow frame. NS Suggest using #8 x 2-1/2" screws. Screw length is dependent upon frame structure, screw length must be of sufficient length to securely anchor unit in opening.
 - 9.) **IMPORTANT:** When anchoring unit through sill/jamb, place screws at shim locations and seal screw heads with a good quality sealant.
 - 10.) Close sashes and lock window.
 - 11.) **Shim Jambs**, 5" from the head, 1" below the meeting rail and 5" from sill
 - 12.) Check that frame members are plumb and square and check that the seal gap between the sashes and frame is uniform across the entire window. Add shims if necessary and make sure that the distance between shims around the entire window does not exceed 16" inches.
 - 13.) Cut and remove center banding.
 - 14.) Raise lower sash completely and tilt sash inward.
 - 15.) Fasten screws into interior track between pivot shoe (square nylon block which locks when sash is tilted inwards) and bottom of the balance.
- *Do not put screws in path of pivot shoe as this would hinder the operation of the window.**
- 16.) Tilt lower sash back into frame and check that the gap between sash and frame remain constant over the entire height of the window.
 - 17.) Remove inside sash stops (top inside track) and fasten screws into shim location
 - 18.) Fasten screws into the bottom shim locations, then insert all covers and sash stops back to original position.
 - 19.) Once all installation screws have been installed, re-verify that the unit has remained level, plumb and square. The window unit can be readjusted by loosening the screws, leveling, shimming and re-tightening them as required.
 - 20.) Insulate between the window frame and the rough opening, ensuring all voids are filled. Caution must be exercised not to over pack the insulation causing unit frame to distort.
 - 21.) Seal and trim window inside and out to suit application

North star Windows and Doors warranty is only valid, if one of these two methods are followed.

 	REVISION	BORDERS UPDATE	ND. 2	BY HA	DATE 11-21	DWG. NO. 1271-ID0016-A	
	TITLE					DIMENSIONS ARE IN INCHES.	DRAWN HA
	DOUBLE HUNG TILT WINDOW					SPECIFIED TOLERANCES:	DATE 04-21
	SERIES #1271					0.051-0.100: +/-0.010	CHECKED
UNIT ANCHORING LOCATION					0.101-0.125: +/-0.015	APPROVED GS	
CONFIDENTIAL The information contained in this document is strictly proprietary to North Star Windows and Doors may not be used in any way or for any purpose outside of the company without the express written consent.					0.126-0.25: +/-0.018	DATE 04-21	
					0.251-0.500: +/-0.020	SCALE 1:1	
					0.501-1.000: +/-0.025	plot 1:3	
					DIM>1.000: +/-0.030	SIZE	

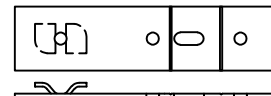
INSTALLATION INSTRUCTIONS

SERIES #1271 DOUBLE HUNG TILT WINDOW



- 1.) Check rough opening to ensure that the window unit will fit. The rough opening should be 1/4" to 1/2" larger than the window, both horizontally and vertically.
- 2.) Place the galvanized steel strap anchor clips 2" in from each corner, at the meeting rail and then at approximately 16" intervals around the window.
- 3.) Center frame in opening so there is equal space between the jambs of the frame and the jambs of the rough opening.
- 4.) Shim sill so it is level and 1/8" to 1/4" off the sill plate. Shim behind each clip location so that the seal gap between the sashes and frame is uniform across the entire window. Do not place shims at the head. Add shims if necessary.
Check: Shims should be firm but not tight enough to cause the jambs to bow.
Check: level, plumb and squareness of frame and adjust shims if necessary
- 5.) Install using suggested #8 x 2" screws at each of these locations
- 6.) Insulate between the window frame and the rough-opening, ensuring all voids are filled. Caution must be exercised not to over pack the insulation, causing unit frame to distort.
- 7.) Seal and trim window inside and out to suit application.

Strap
Anchor



North star Windows and Doors warranty is only valid, if one of these two methods are followed.



REVISION	BORDERS UPDATE	ND. 2	BY HA	DATE 11-21	DWG. NO.	1271-ID0016-B
TITLE				DOUBLE HUNG TILT WINDOW SERIES #1271 UNIT ANCHORING LOCATION		
DIMENSIONS ARE IN INCHES. SPECIFIED TOLERANCES: DIM<0.050:±/0.008 0.051-0.100:±/0.010 0.101-0.125:±/0.015 0.126-0.25:±/0.018 0.251-0.500:±/0.020 0.501-1.000:±/0.025 DIM>1.000:±/0.030				DRAWN HA		DATE 04-21
CONFIDENTIAL The information contained in this document is strictly proprietary to North Star Windows and Doors may not be used in any way or for any purpose outside of the company without the express written consent.				CHECKED		DATE 04-21
				APPROVED GS		DATE 04-21
				SCALE 1:1 plot 1:3		SIZE